

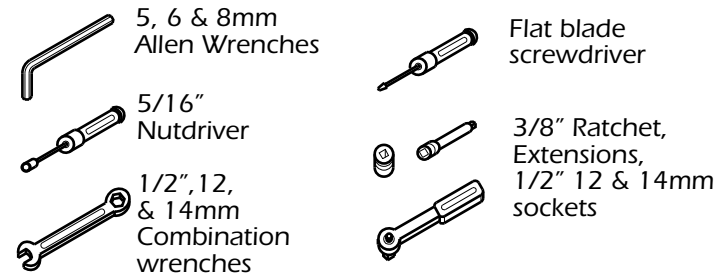
MORE POWER : LESS NOISE



Congratulations, you have purchased the finest exhaust system for your motorcycle on the market. Your Vance & Hines exhaust system is designed and crafted for maximum performance, a perfect fit, a great sound and unbeatable style. Please follow the installation instructions below and if you have any questions, please call our technical support line at (562) 926-5291.

Attention installer (if other than owner), please forward this instruction sheet to the owner of this product. These instructions contain valuable information to the end user.

**TOOLS
REQUIRED**



READ ALL INSTRUCTIONS BEFORE BEGINNING INSTALLATION

**STOCK EXHAUST
SYSTEM REMOVAL**

1. Cover the frame tube in front of the exhaust with duct tape or any suitable material to protect frame during exhaust removal.
2. Loosen and remove the two bolts on the rear brake pedal assembly and carefully lower it out of the way.
3. Remove transmission heat shield cover by removing 2 screws (Figure 1). This will not be re-used.
4. Place heat shield screws back into transmission case and tighten.
5. Loosen the clamp that holds the muffler body to the collector.
6. Remove the two screws holding the muffler body to the stock bracket and carefully remove the muffler body from the motorcycle (may require assistance).
7. Remove stock muffler hanger bracket.
8. Remove front header hanger bracket.
9. Unplug the O2 sensor.
10. Remove the two flange nuts and two flange bolts holding the exhaust headers to the cylinder heads. Save these for re-use. NOTE: It may be necessary to loosen the heat shield clamps to access the nuts on the front cylinder. Carefully remove the header from the motorcycle (may require assistance).
11. Using a 14mm wrench, carefully remove the O2 sensor from the exhaust.
12. Check the stock exhaust gaskets to be sure they are in good condition. If you have any doubts as to their condition, replace them.

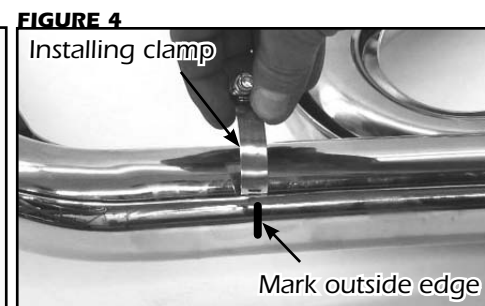


FIGURE 5

Arrows indicate screw head direction

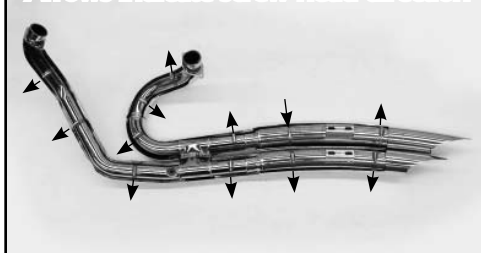


FIGURE 6

Install nut plate



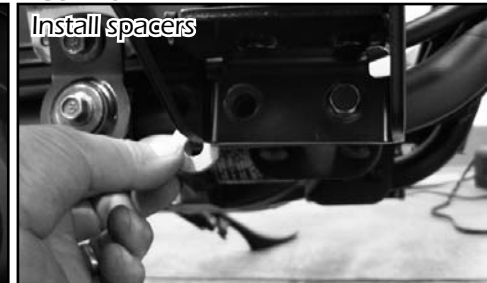
FIGURE 7

Align heat shields



FIGURE 8

Install spacers



VANCE & HINES EXHAUST SYSTEM INSTALLATION

1. Install mounting bracket 567-P to frame by using two 10mm x 25mm button head bolts (supplied) to attach the bracket to the frame (Figure 2).
2. Remove head pipe assembly and head pipe heat shields from protective packaging. Place each heat shield on a non-abrasive surface such as a blanket or carpet. Using a felt tip pen, mark outside edge of each heat shield to show location of mounting clips that hose clamps will loop through (Figure 4).
3. Lay head pipes into their respective heat shields.
4. Place upper rear cylinder heat shield over the retaining lip of lower rear cylinder heat shield aligning clip spacer (Figure 3).
5. Install #20 hose clamps by feeding tail end of clamps into heat shield clips (Figure 4). Take note of clamp screw head direction (Figure 5). Screw head must be accessible when system is installed on motorcycle for adjustment purposes.
6. Using stock flange nuts and bolts, carefully install head pipe assembly into exhaust ports, starting with the rear cylinder. Assistance may be required. NOTE: Do not tighten at this time.
7. Apply a small amount of anti-seize compound to the threads of the O2 sensor and install it into the new head pipe. Plug the O2 sensor into the motorcycle and use two nylon cable ties to hold O2 sensor wire to frame away from head pipe. NOTE: Be careful not to get anti-seize on O2 sensor tip, it may affect sensor function.
8. Slide the two nut plates (supplied) into the brackets that are welded to the back side of the mufflers (Figure 6). Loosely install four 5/16" x 5/8" flange head bolts (supplied).
9. Tighten the exhaust port flange nuts and bolts. Using #36 hose clamps (supplied), and following the same procedures as steps 2, 3 & 5, install the muffler body heat shields onto muffler bodies.
10. Place muffler body heat shields over the front and rear header heat shields so that both header heat shield ends are just covered by the muffler heat shields. Align the front edge of the muffler heat shields so that they are flush with each other. Finger tighten the 5/16" flange head bracket bolts for muffler alignment after the muffler heat shields are installed.
11. Tighten all hose clamps securing heat shields. NOTE: Align rear cylinder heat shields evenly then tighten. (Figure 7)
12. Align muffler bodies so that the vertical gap between the mufflers is the same from front to back and tighten the 5/16" flange head muffler body bracket bolts.
13. Re-install the rear brake pedal assembly with stock mounting bolts and the supplied spacers. Install the spacers (one per bolt) between the rear brake pedal assembly and frame for proper clearance (Figure 8).
14. Check for adequate clearance between all exhaust system components and motorcycle.
15. Be sure to tighten all hardware before starting your motorcycle.
16. After installation and before starting motorcycle, completely clean pipes and mufflers with cleaning solvent and a clean soft cloth that will not leave a residue. NOTE: Any residue, oil, or fingerprints will stain the chrome when the metal heats up.

EXHAUST CARE - HELPFUL HINTS TO AVOID DISCOLORATION OF EXHAUST SYSTEM

1. When installing a new set of chrome pipes, make sure your hands are clean and free of oil. After installation, thoroughly clean pipes with a soft cloth and cleaning solvent that will leave no residue (chrome wax / polish, glass cleaner, alcohol, ammonia, etc...) before starting the motorcycle.
2. Avoid long periods of idling as this can cause discoloration.
3. Intake leaks can cause the engine to run lean and overheat, this could lead to discoloration.
4. Make sure there are no exhaust leaks at the junction of the exhaust pipes and cylinder head. We recommend replacing gaskets if they are worn.

VANCE & HINES OPTIONAL ACCESSORIES

FUELPAK



FUEL MANAGEMENT:

Take the guess work out of fuel injection with Fuelpak Fuel Management. Contact your local dealer or call (562) 921-0071 to order. Visit fuelpakfi.com for more information. Fuelpak is intended for racing or off-highway use only, and is not legal for sale or use in California on pollution-controlled vehicles.

PLEASE NOTE: Every effort is made for Vance & Hines Exhaust Systems to provide improved cornering clearance. However, due to design and space limitations on some motorcycle models, ground and cornering clearance may not be improved and in some cases may be reduced. Be sure to follow proper installation instructions.

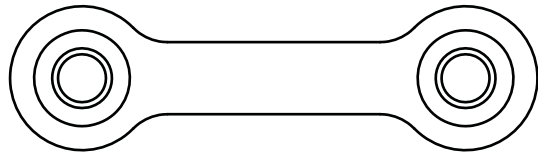
PACKING LIST

MORE POWER : LESS NOISE

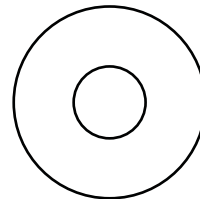
ALL PARTS SHOWN ARE ACTUAL SIZE



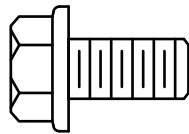
Nylon cable ties x 2



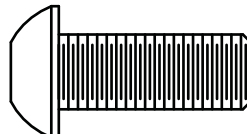
Nut plate x 2



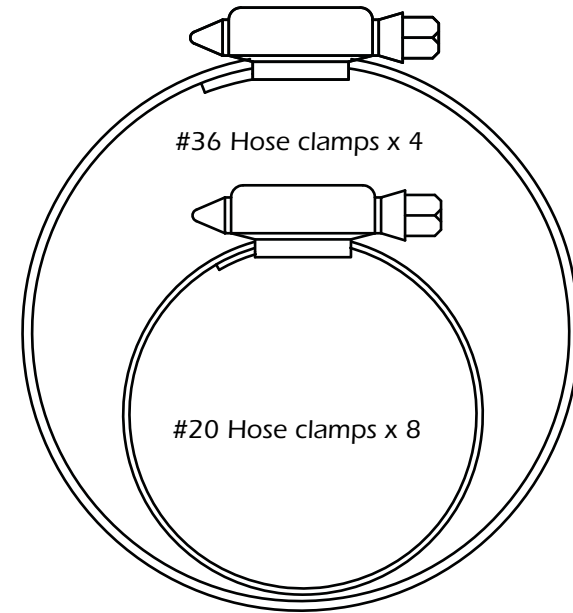
Spacers x 2



5/16" x 5/8" Flange head bolts x 4



10mm x 25mm Button head bolts x 2



#36 Hose clamps x 4

#20 Hose clamps x 8

PARTS NOT SHOWN:

567-P	Bracket	x1
Y345FC	Header	x1
Y345HC	Front heat shield	x1
Y346HC	Rear top heat shield	x1
Y347HC	Rear bottom heat shield	x1
Y337HC	Front muffler heat shield	x1
Y338HC	Rear muffler heat shield	x1

WARRANTY

Vance & Hines exhaust systems are warranted against defects in material and workmanship for a period of 90 days from the date of purchase from an authorized dealer. This warranty does not cover discoloration of chrome finishes. This warranty is limited to the repair or replacement of a product proven to be defective from normal use. Vance & Hines exhaust systems are designed to fit and operate on OEM motor and chassis. This warranty does not cover any product subject to abuse, misuse, improper installation or modification.

FUEL MANAGEMENT

GET THE MOST OUT OF YOUR RIDING EXPERIENCE...

AN AFTERMARKET EXHAUST SYSTEM IS ONLY YOUR FIRST STEP, NOW YOU NEED FUEL MANAGEMENT.

NOW YOU NEED FUELPAK.

Your fuel injected Harley-Davidson® is equipped with an ECU (electronic control unit) that's programmed to deliver fuel to the motor based on an air/fuel ratio for a stock air filter and stock exhaust system. When you install a performance exhaust system, your airflow changes, so you need a fuel management system that adjusts your air/fuel ratio to match the changes. That fuel management system is Fuelpak. Fuelpak adds and takes away fuel, allowing for a more precise range of refinement in your air/fuel ratio. Get the perfect fuel management combination with your Vance & Hines exhaust system, get Fuelpak. For more information visit the tuning center at fuelpakfi.com

NOTICE: Fuelpak is intended for racing or off-highway use only, and is not legal for sale or use in California on pollution-controlled vehicles.



MORE POWER : LESS NOISE

13861 ROSECRANS AVENUE / SANTA FE SPRINGS, CA 90670
SALES: (562) 921-7461 / TECHNICAL: (562) 926-5291 / FAX: (562) 802-0110
VANCEANDHINES.COM